

# ST GREGORY'S CATHOLIC SCIENCE COLLEGE

## INTRODUCTION



### INTRODUCTION

Thank you for visiting our Planning Application Public Consultation at St Gregory's Catholic Science College.

Our team of architects and consultants are preparing plans to redevelop the site for new school teaching facilities. We are welcoming comments from pupils, teachers and parents as well as the wider local community prior to the submission of a planning application to Brent Council.

Please feel free to review the exhibition boards, ask questions to our design team and leave your comments on the feedback forms provided.

The boards are also available for viewing via the school website. Please follow the link below:

[www.stgregorys.harrow.sch.uk](http://www.stgregorys.harrow.sch.uk)

### THE DESIGN TEAM



**jestico + whites**

Architect



Contractor



Landscape Designer



Planning Consultant

### CONCEPT AND BRIEF

St Gregory's Catholic Science College is a coeducational Roman Catholic secondary school and sixth form located in the Kenton area of the London Borough of Brent.

The school is in need of redevelopment and the key drivers for the redesign are:

- Provide a more efficient layout and enhanced teaching facilities. The new school capacity will be 1,217, 11-18yrs students + 28 place ARP (Alternative Resourced Provision) + 92,9 staff
- Inclusive design with robust finishes
- Controlled access points and visibility for supervision
- ARP (Alternative Resourced Provision) to connect to the main school circulation routes while maintaining a distinct identity
- Sixth Form to maintain independence via a separate entrance

#### REVIEWING MATERIAL

- 1 Daily review
- 10 Weekly and monthly review



#### QUESTIONING

- 3 Ask questions
- 6 Check for student understanding



#### SEQUENCING CONCEPTS & MODELLING

- 2 Present new material using small steps
- 4 Provide models
- 8 Provide scaffolds for difficult tasks



#### STAGES OF PRACTICE

- 5 Guide student practice
- 7 Obtain a high success rate
- 9 Independent practice



Staff are encouraged the use of Rosenshine's Principles as a pedagogical approach

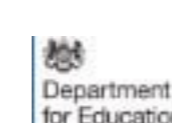
### ABOUT THE SCHOOL

St Gregory's has high academic standards, a genuine prayer life, a strong moral purpose and excellent community spirit. Their Catholic faith is at the heart of everything that the school does and is central to their mission statement:

*'Pro Deo, For God the Best and the Greatest'*

The school's ambition for the students is to become confident, articulate and socially skilled, with a strong sense of their place in society. Students are supported and nurtured, with skilled staff working to meeting their needs.

St Gregory's complies with duties in the Equality Act 2010 and the Special Educational Needs and Disability Regulations 2014. The school curriculum is broad and balanced and develops pupils' knowledge, understanding, skills and talents. Departments follow the full national curriculum for all students including those with disabilities or special educational needs.



# ST GREGORY'S CATHOLIC SCIENCE COLLEGE

## EXISTING SITE

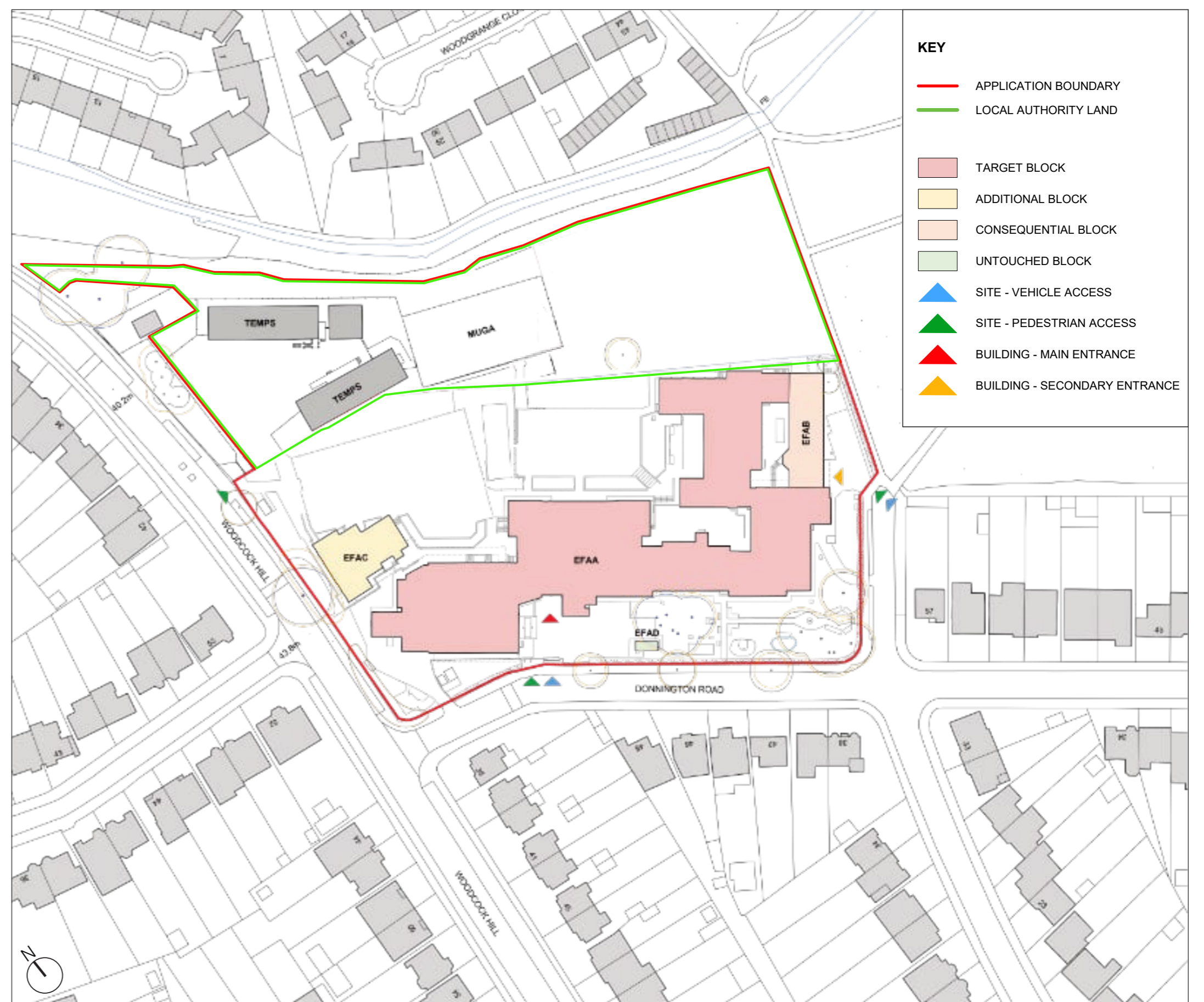


### EXISTING SITE

- St Gregory's Catholic Science College is an existing school located in the west of Woodcock Park.
- The school is situated within a residential area.
- The main pedestrian and vehicular access is from Donnington Road and Ilmington Road. Majority of the students access the school through Woodcock Park via Woodcock Hill.
- The site has current GIFA (Gross Internal Floor Area) of 8,759m sq.

#### School Building Code

- **EFAA** - Main teaching block including Dining, Main Hall, Sports Hall and reception spaces.
- **EFAB** - Connected to EFAA, predominantly for Sixth Form with classrooms and science labs.
- **EFAC** - Standalone block which houses the library and classrooms for RE and ICT.
- **EFAD** - Re-purposed shipping container to the south of site used as a counselling space and food bank.



### SITE ANALYSIS

It is crucial to assess various factors that can impact the functionality, comfort, and sustainability of the new building. Some of the significant aspects to consider are the environment, site constraints and transportation infrastructure of the area.

#### Environment

- Application Boundary
- Local Authority Boundary
- Sun path



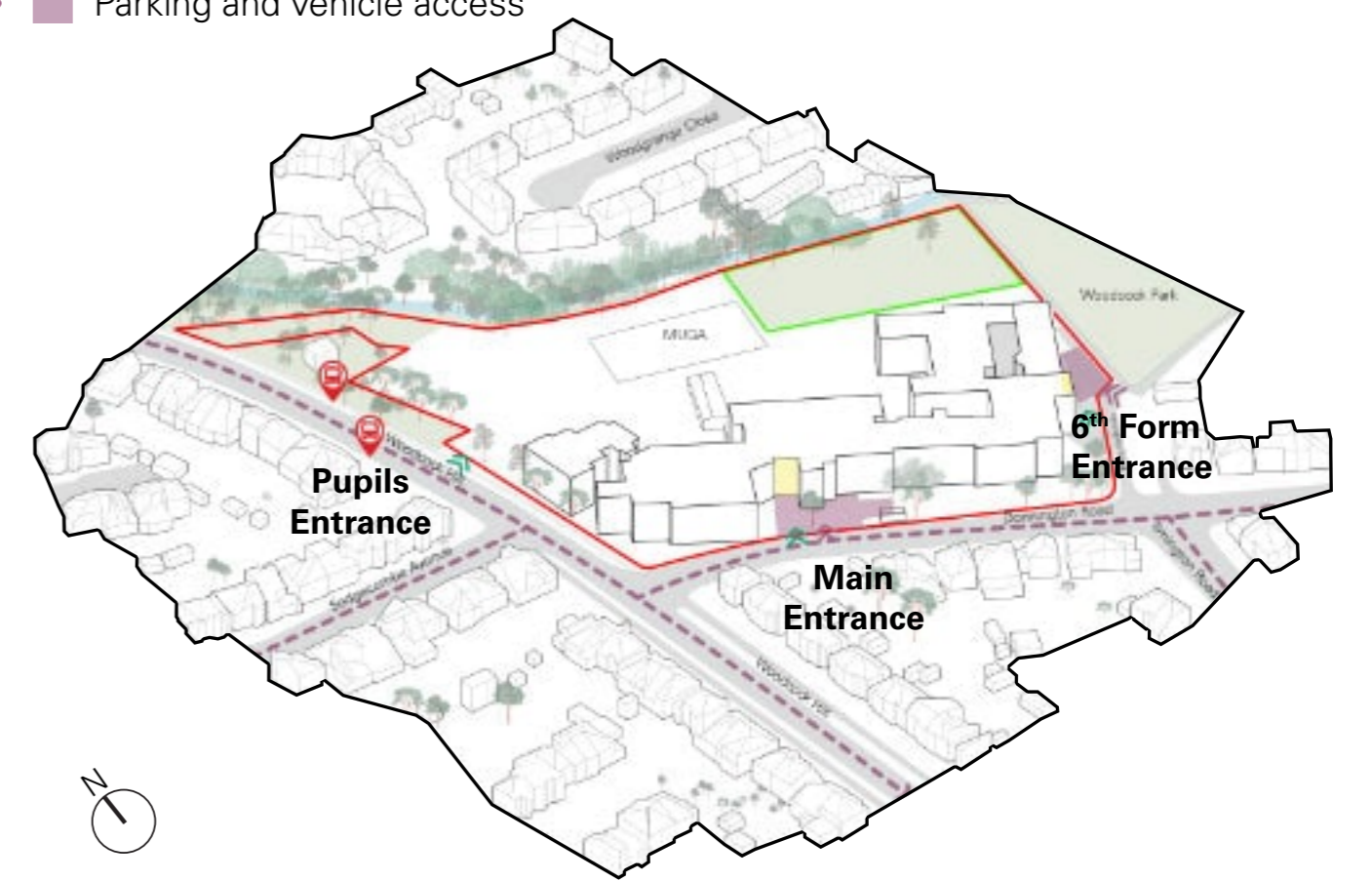
#### Constraints

- Application Boundary
- Local Authority Boundary
- Thames Water Sewer Pipe
- Flood Risk Zone



#### Existing Access & Transport

- Application Boundary
- Local Authority Boundary
- Roads
- Parking and vehicle access
- Pedestrian access
- Entrance
- Bus stop



### EXISTING BUILDING

A comprehensive redevelopment project will be undertaken to address the deteriorating condition of the school facilities which no longer meet the needs of students and staff. This endeavour aims to address the issues stemming from the school's poor state and create an environment conducive to learning and growth.



School buildings

Sports facilities



# ST GREGORY'S CATHOLIC SCIENCE COLLEGE LANDSCAPE PLAN & STRATEGY DIAGRAMS



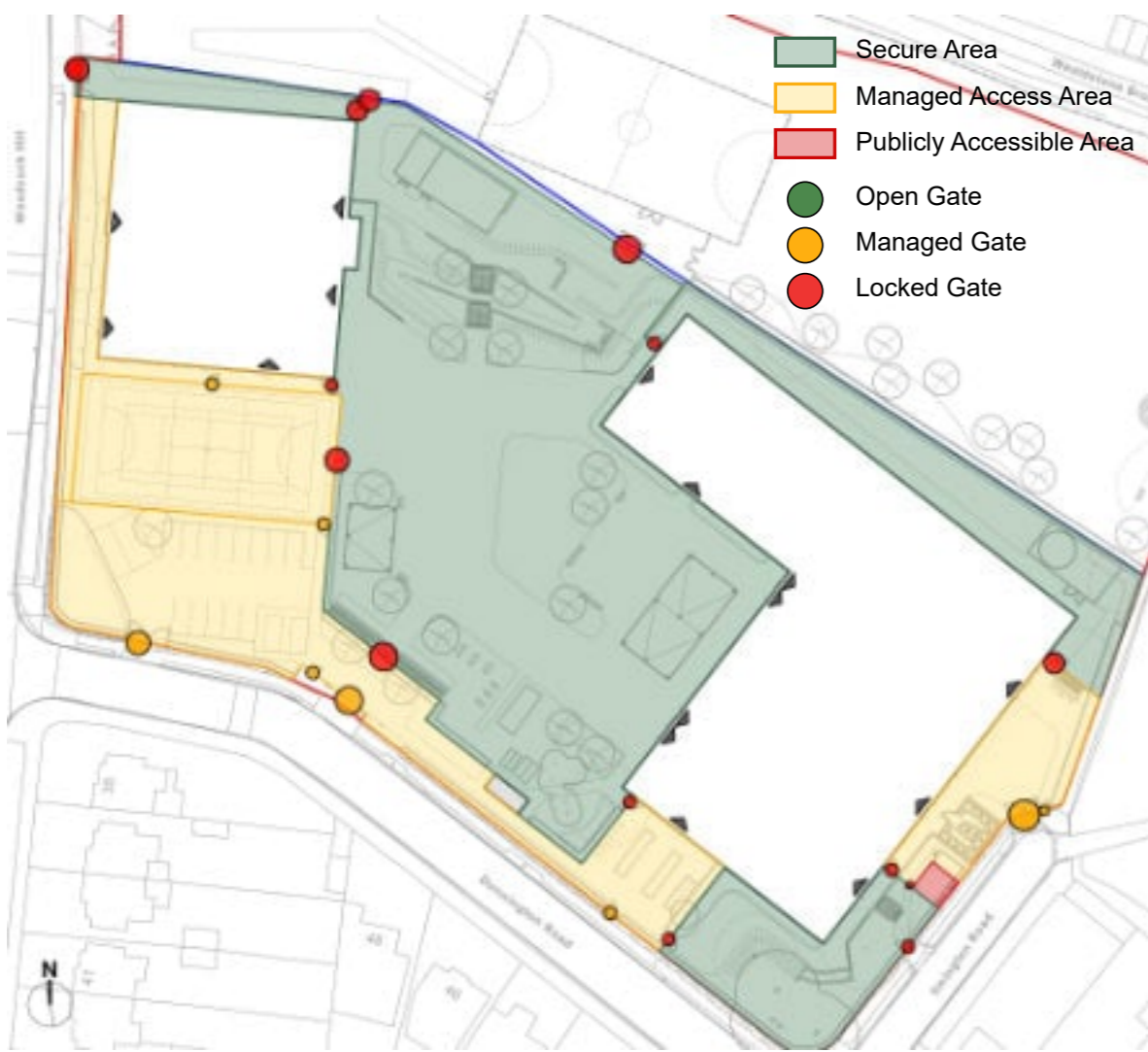
## PROPOSED LANDSCAPE SITE PLAN



- Planning Application Boundary
- School Ownership Boundary
- ▲ Vehicle Access
- ▲ Pedestrian Access
- ① Entrance plaza with staff and visitor cycle parking provision
- ② Pupil main entrance plaza
- ③ Sixth form entrance and service area with student secure cycle parking
- ④ ARP Entrance into garden and to building
- ⑤ Car park: 13 standard bays, 2 accessible bays, 2 minibus bays (includes 1 double EVC point)
- ⑥ External courtyard with covered outdoor dining and recreational facilities
- ⑦ Covered table tennis area
- ⑧ Horticulture Garden
- ⑨ Prayer and memorial garden
- ⑩ ARP and SEN garden
- ⑪ 1 court MUGA
- ⑫ Steps and ramps leading to lower level at Northern boundary
- ⑬ Informal breakout areas
- ⑭ Existing MUGA on park land
- ⑮ Bin Store
- ⑯ Substation and switchroom
- ⑰ Sprinkler Tank compound
- ⑱ GSHP and Cold Water plant rooms
- ⑲ Soft landscape edge to school boundary
- ⑳ Student cycle parking provision

## STRATEGY DIAGRAMS

### Community Use Access and Secure Line Plans



### Out of Hours Access

Some spaces within the school site will be accessible outside of the school day. These spaces include the Multi Use Games Area, areas within the buildings and the food bank. The location of these has been considered to allow for simple management of controlled access areas as shown in yellow. This allows most of the school site to remain secure while also providing amenity to the local community.



### School Entrance and Exit

At the start of the school day the entrance plazas and car park will be opened. Most pupils will enter from Woodcock Park and will be let into the school courtyard where they can access either the Teaching or Sport block to start the school day. Alternative Resource Provision and Sixth Form students have dedicated access points from Ilmington Road. At the end of the school day pupils will exit via the Northern gate into Woodcock Park and exit onto Woodcock Hill as per the existing arrangement.



### Fencing

The majority of the existing school boundary fencing is to be retained, as shown in purple. New fencing shown in blue will provide a secure and safe boundary for the school externals. The Multi Use Games Area will have a 3m rebound weldmesh fence.

### Urban Greening Factor



- Standard trees planted in connected tree pits with a minimum soil volume equivalent to at least two thirds of the projected canopy area of the mature tree
- Extensive green roof with substrate of minimum settled depth of 80mm. (or 60mm beneath vegetation blanket) meets the requirements of GRO Code 2014
- Flower-rich perennial planting.
- Hedges (line of mature shrubs one or two shrubs wide)
- Groundcover planting
- Amenity grassland (speciespoor, regularly mown lawn)
- Permeable paving
- Sealed surfaces (e.g. concrete, asphalt, waterproofing, stone)

The plan illustrates the urban greening strategy to increase the level of greening and biodiversity improvements across the site. This includes extensive green roofs to both buildings, flower rich planting, and an increase in tree planting. The scheme meets the London Plan minimum requirements of Urban Greening and targets biodiversity net gain.

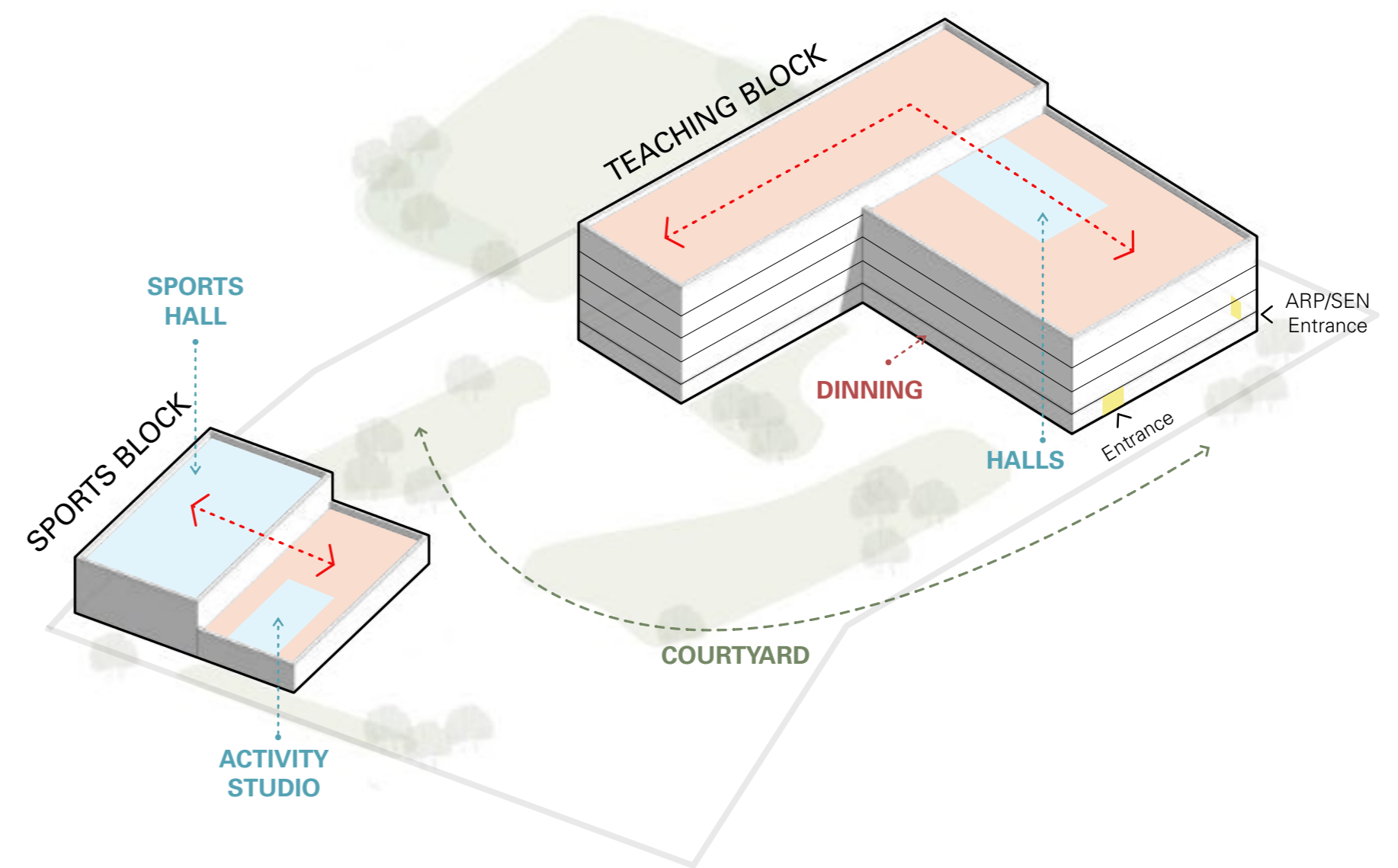
# ST GREGORY'S CATHOLIC SCIENCE COLLEGE

## MAIN BUILDING LAYOUT AND DEPARTMENTS

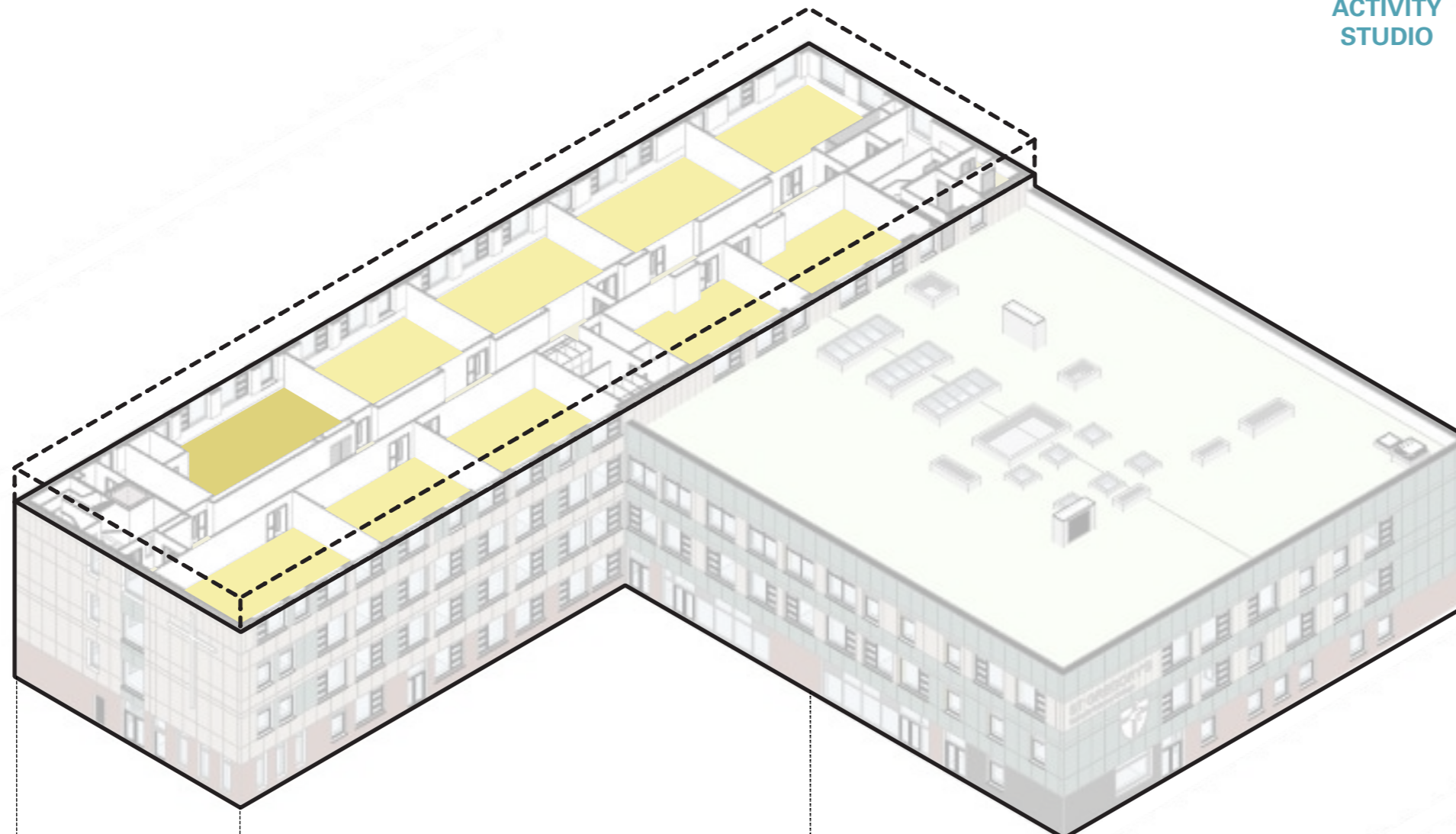


### MAIN BUILDING LAYOUT & CONCEPT

- The school halls are placed on the ground floor to provide direct access to the courtyard or the main road.
- The dining hall, main hall and drama are adjacent. This allows for efficient and secure access for the local community.
- Sixth Form and Additional Resource Provision (ARP) / Special Educational Needs (SEN) have separate access points to better distribute students throughout the site and provide independence whilst maintaining inclusion.
- The floors are organised into departments, for efficiency and legibility reasons.
- Green roof and photovoltaics to meet sustainability and Net Zero Carbon in Operation requirements set by the London Plan.

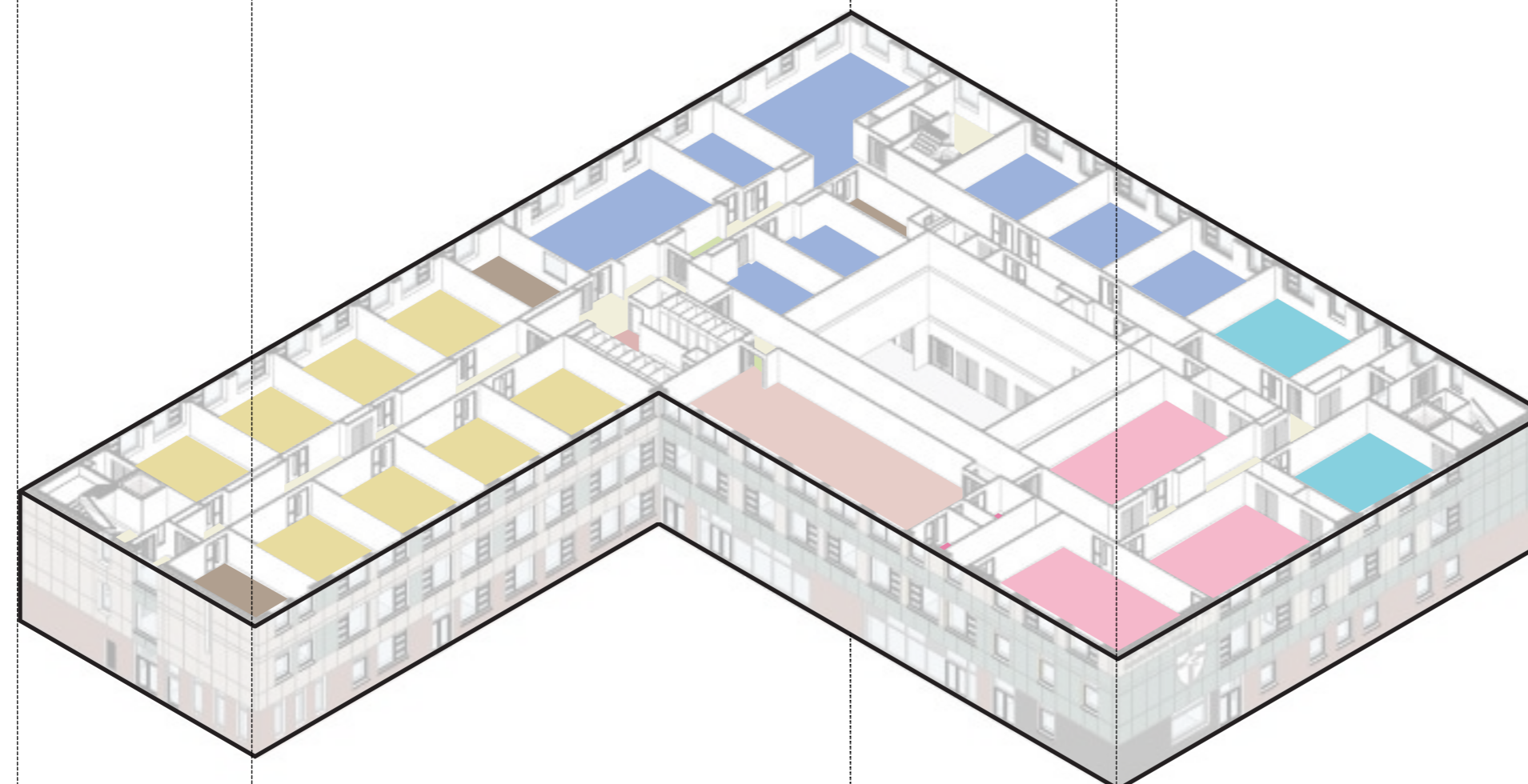


**3**  
FLOOR



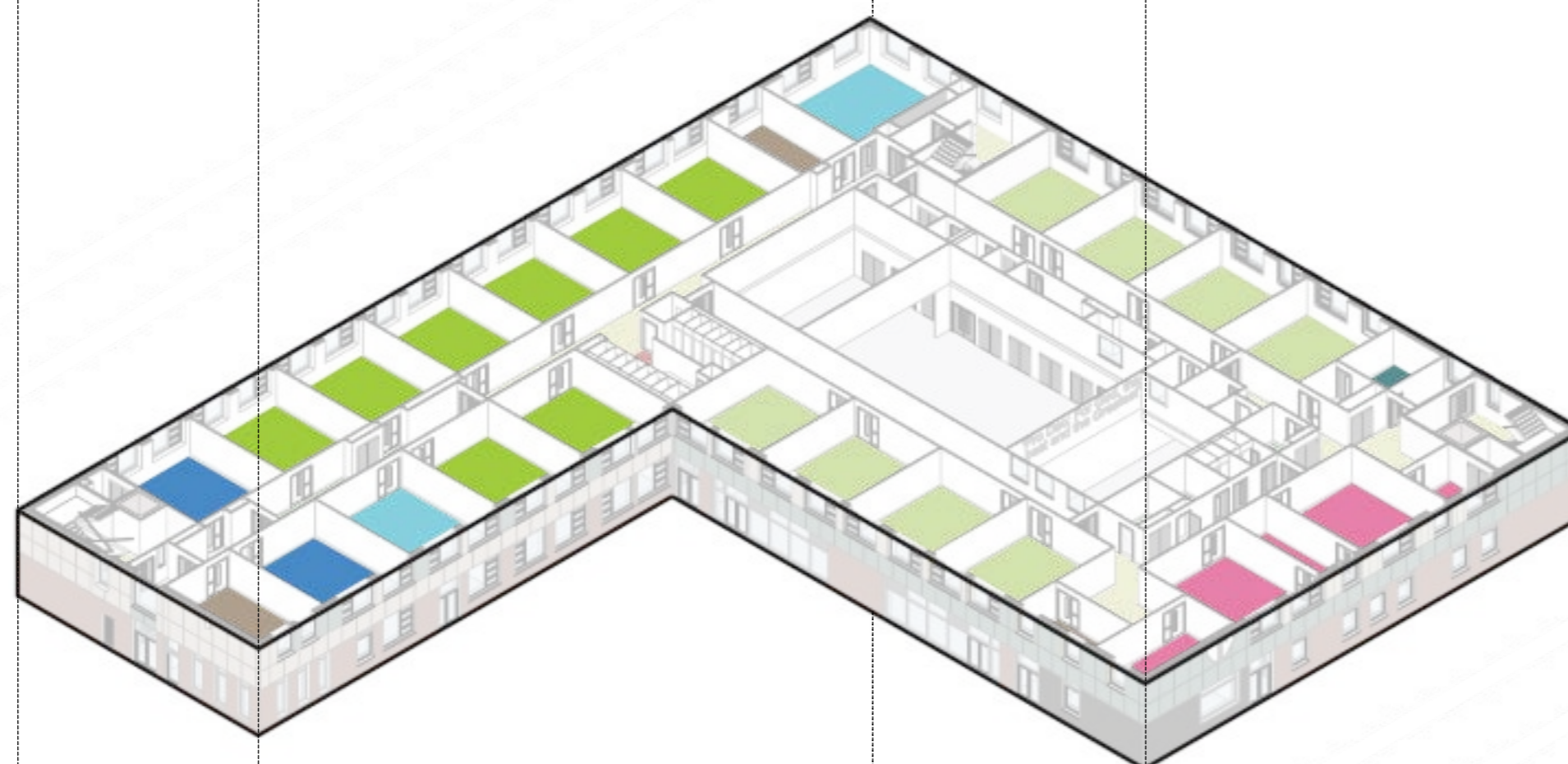
Science  
Science Prep

**2**  
FLOOR



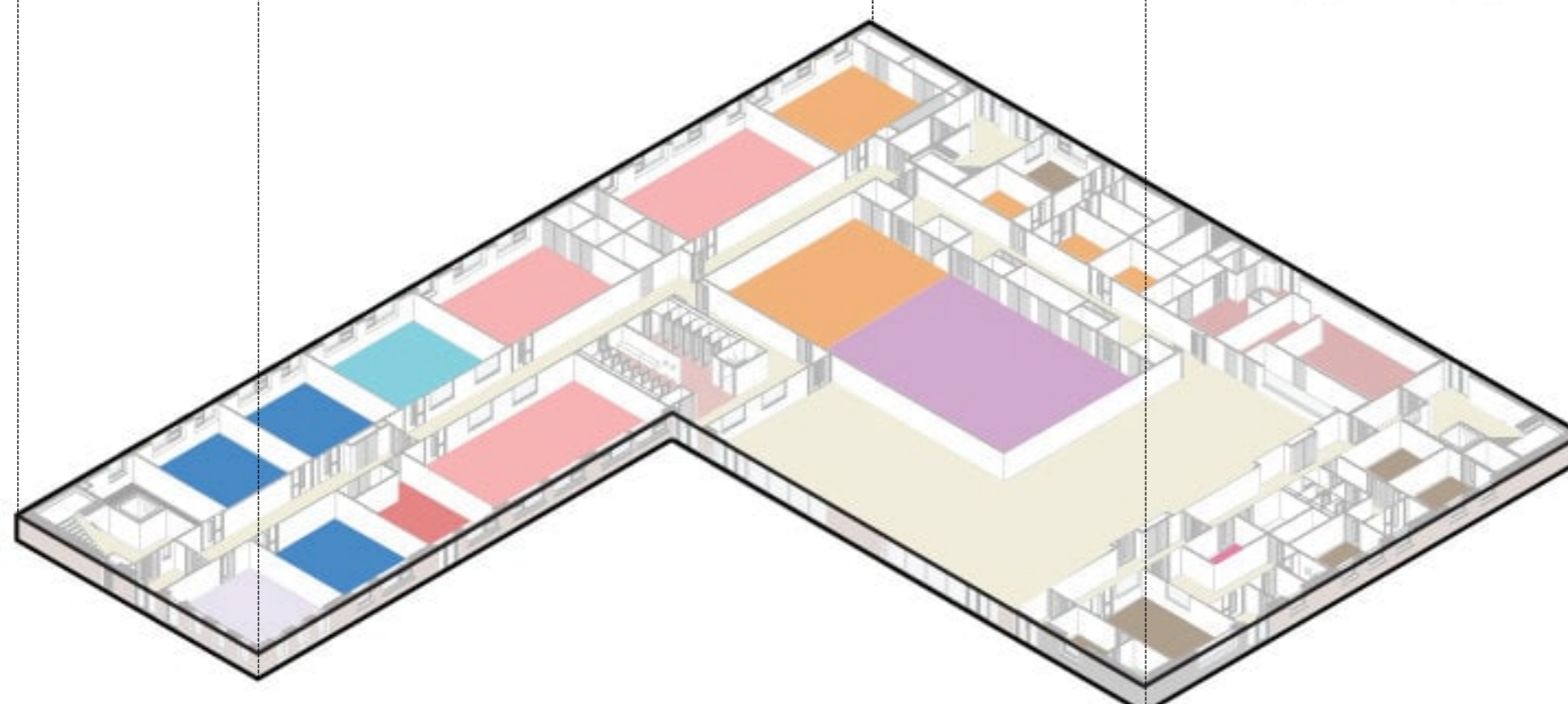
English  
Library  
Sixth Form  
ICT  
Art

**1**  
FLOOR



Maths  
Humanities  
Modern Foreign Languages  
Special Educational Needs &  
Alternative Resource Provision

**0**  
FLOOR



Main Hall  
Drama  
Dining  
Music  
Design & Technology  
Chapel  
ICT  
Humanities



# ST GREGORY'S CATHOLIC SCIENCE COLLEGE

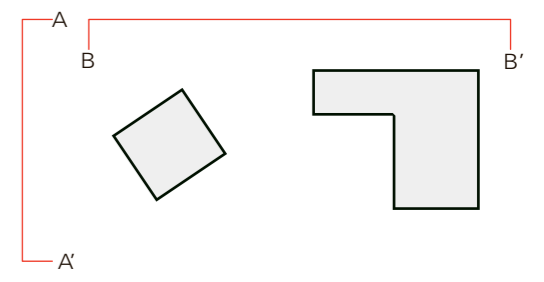
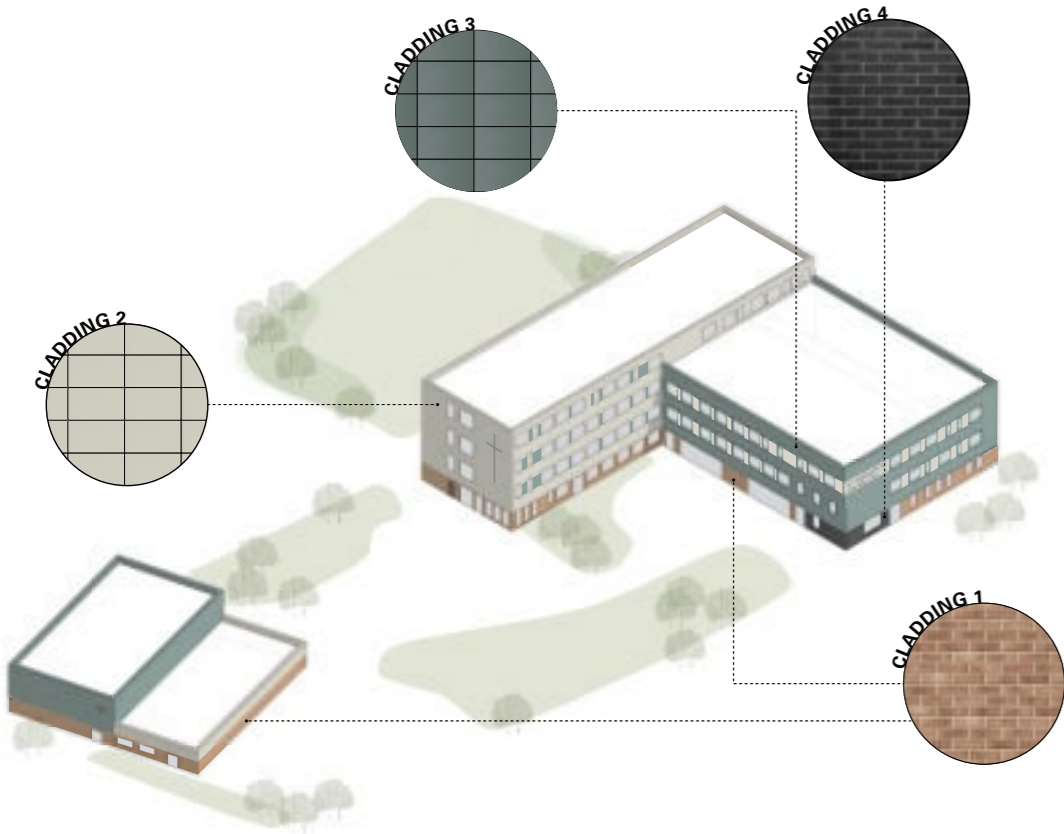
## EXTERNAL APPEARANCE & GROUND FLOOR



### ELEVATION TREATMENT

The materials chosen for St Gregory's are:

- **Blue Rainscreen Cladding** for sports hall and for the 3 storey teaching block.
- **Brick and Beige Rainscreen Cladding** for sports block entrance and for the 4 storey teaching block.



Section A-A'



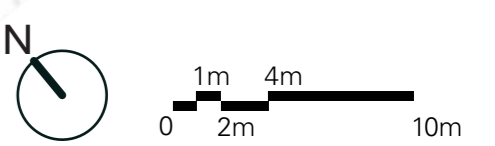
Section B-B'

External Facade Finishes

- ① Brickwork
- ② Rainscreen Cladding (Beige)
- ③ Rainscreen Cladding (Blue)
- ④ Window System
- ⑤ Curtain Wall System
- ⑥ Glazed Door

### PROPOSED GROUND FLOOR

#### Teaching Block

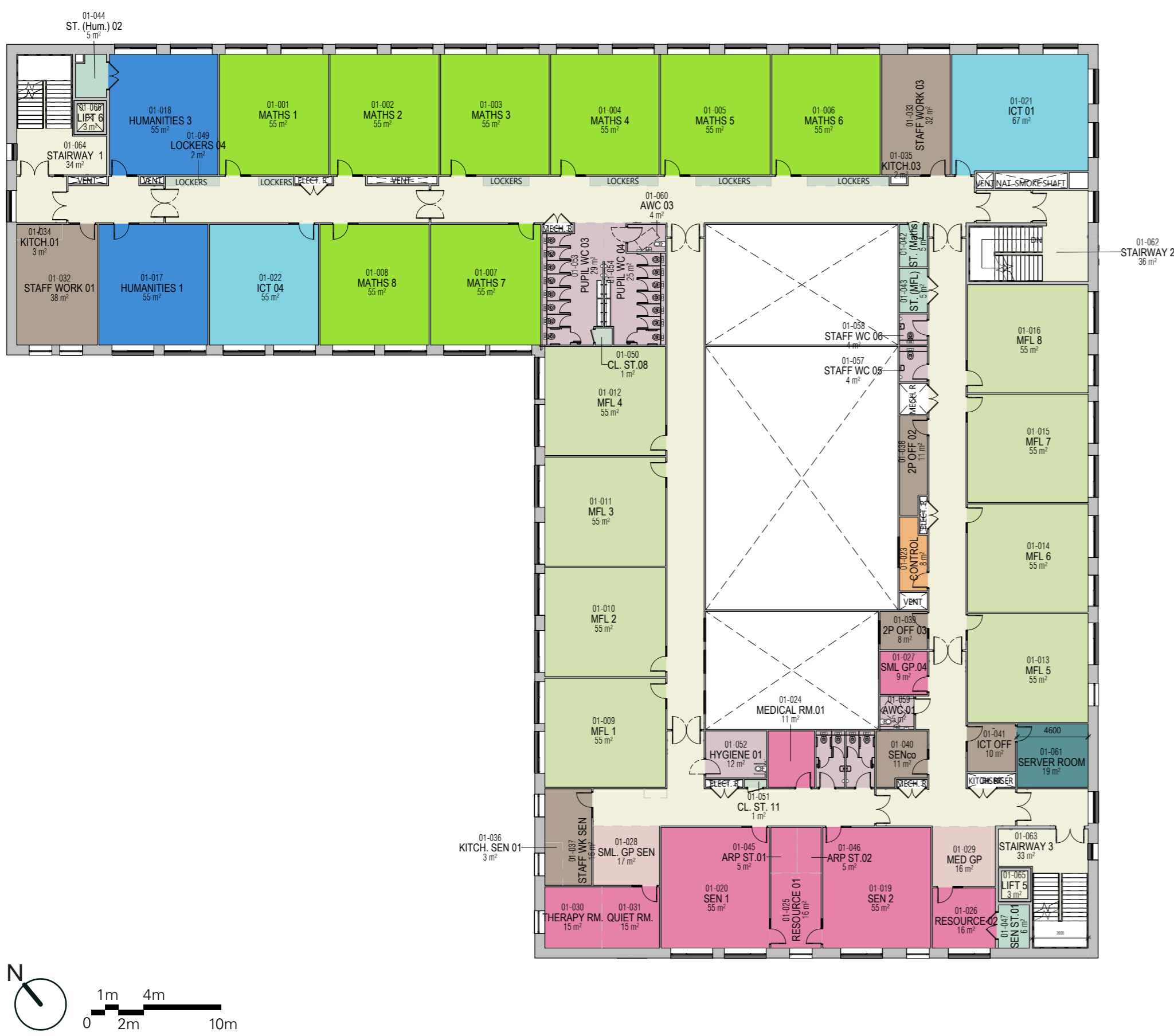


# ST GREGORY'S CATHOLIC SCIENCE COLLEGE

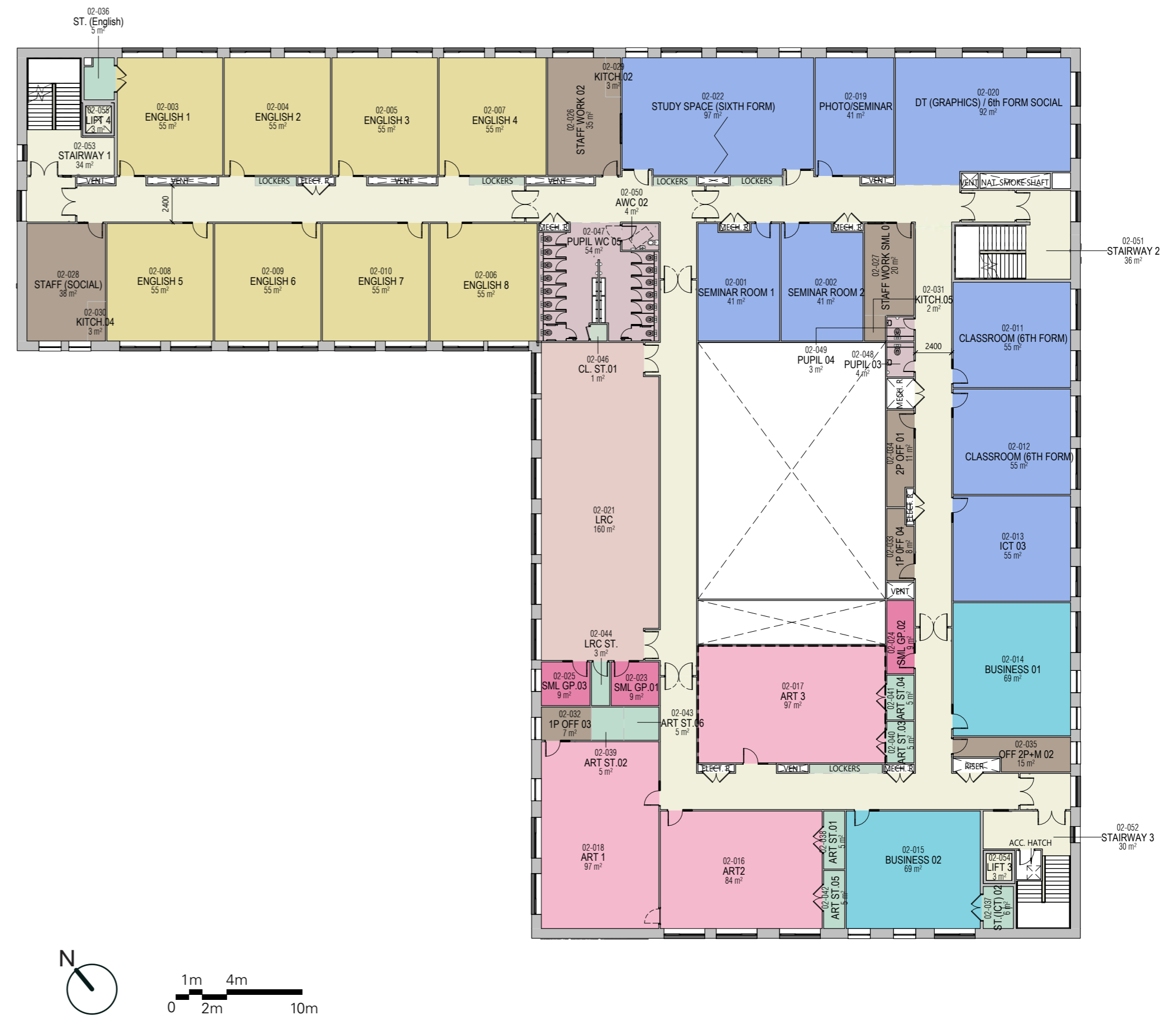
## FIRST & SECOND FLOOR



**PROPOSED FIRST FLOOR**  
Teaching Block



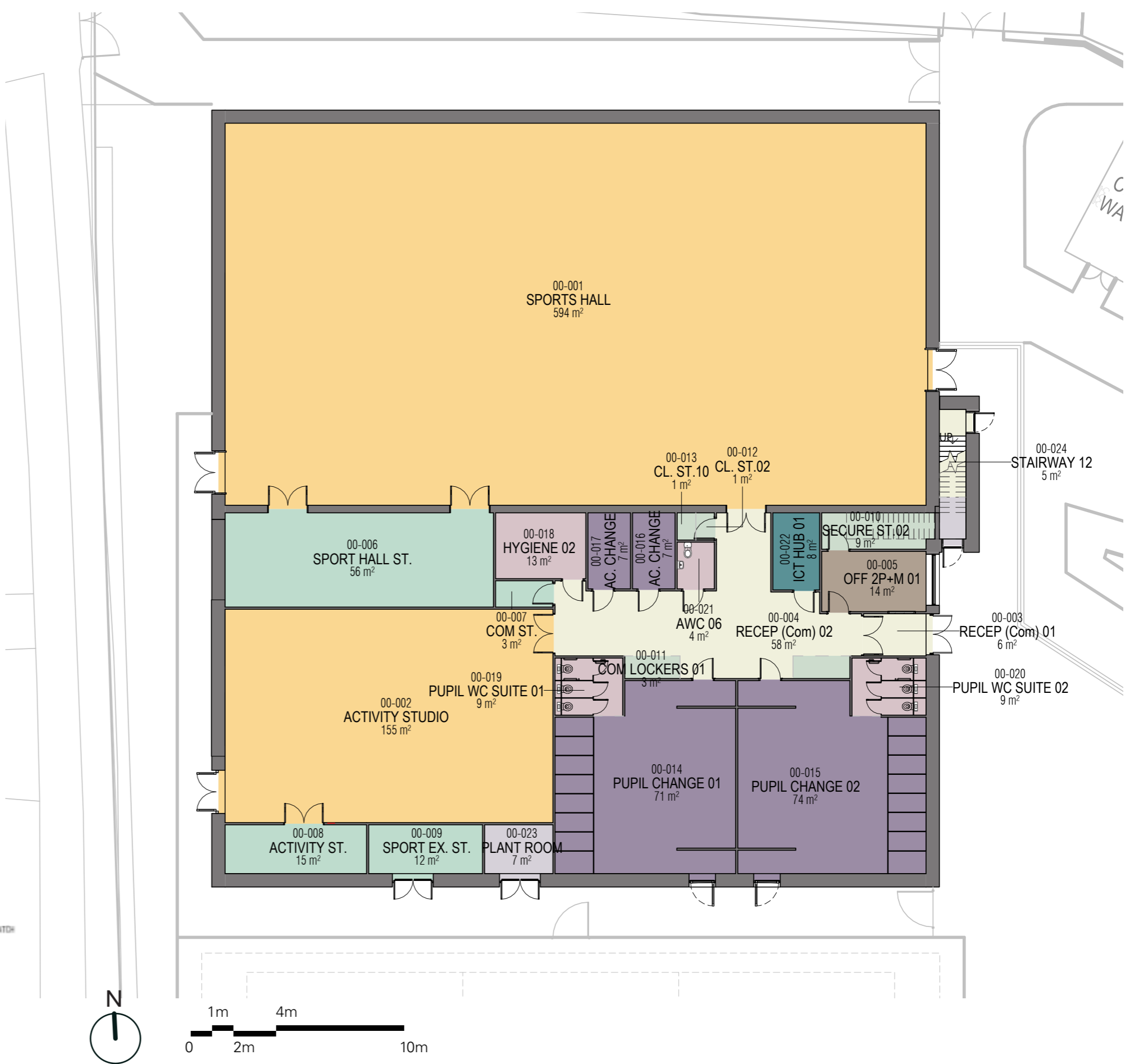
**PROPOSED SECOND FLOOR**  
Teaching Block



**PROPOSED THIRD FLOOR**  
Teaching Block



**PROPOSED GROUND FLOOR**  
Sports Block



# ST GREGORY'S CATHOLIC SCIENCE COLLEGE

## EXTERNAL VIEWS



AERIAL VIEW



ENTRANCE VIEW



COURTYARD VIEW



OUTDOOR DINING AREA



MULTI USE GAMES AREA



# ST GREGORY'S CATHOLIC SCIENCE COLLEGE

## INTERNAL VIEWS



DINING VIEW



DINING VIEW



LIBRARY VIEW



MAIN HALL VIEW

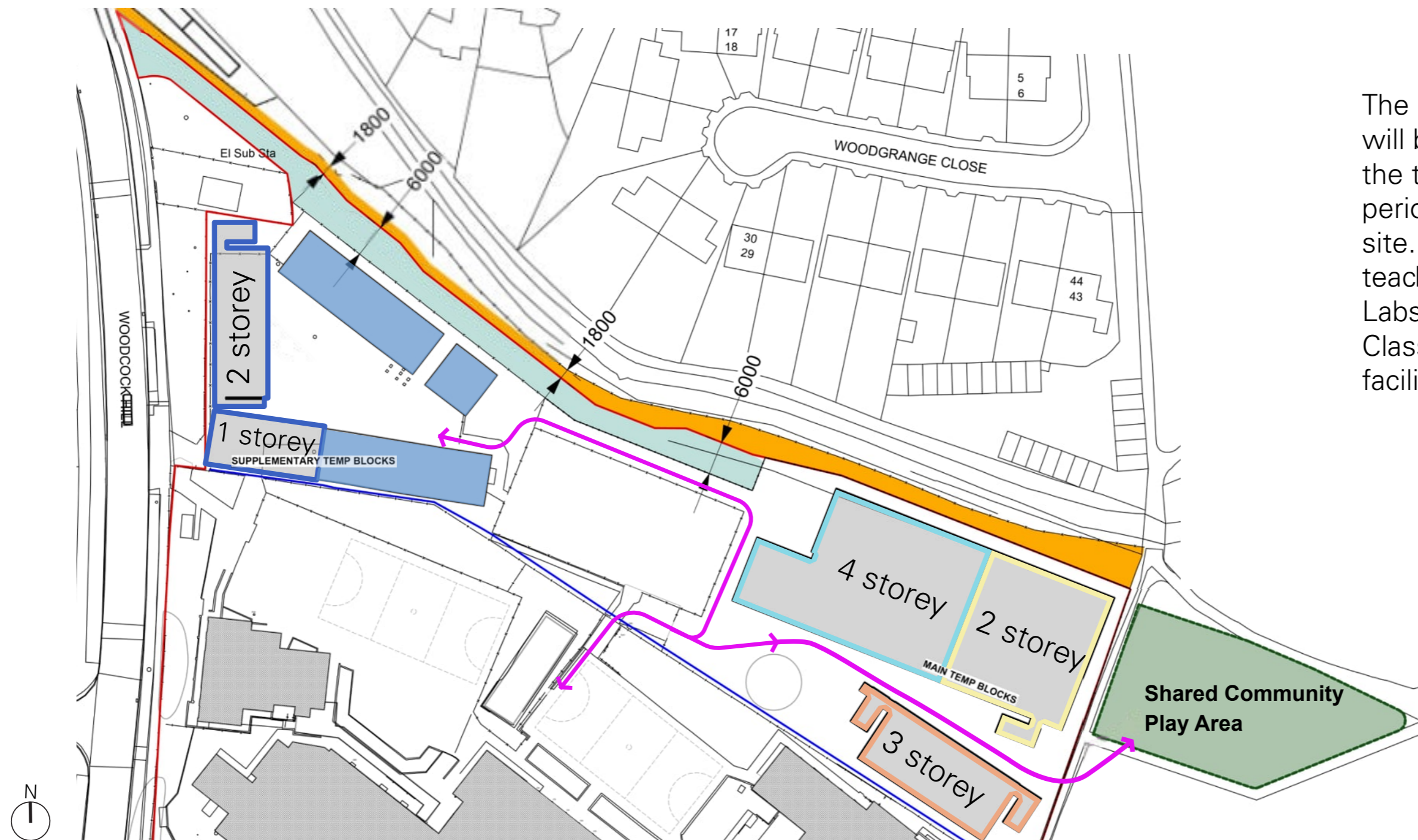


# ST GREGORY'S CATHOLIC SCIENCE COLLEGE

## TEMPORARY ACCOMMODATION



### PLAY AREA



The high quality modular building from Portakabin will be provided to ensure minimal disruption to the teaching and learning throughout the 96 week period the temporary accommodation will be on site. The temporary school will provide DfE agreed teaching spaces, including; fully fitted Science Labs & DT Studios, Library, General & ICT Classrooms, Chapel, Staff areas and welfare facilities.

- Existing Temporary Accommodation
- School Access
- Temporary Road
- Public Access

### LAYOUTS



- DT
- History
- SEND
- ICT
- Staff / Admin
- Maths
- Drama
- Science Rooms / English / Music

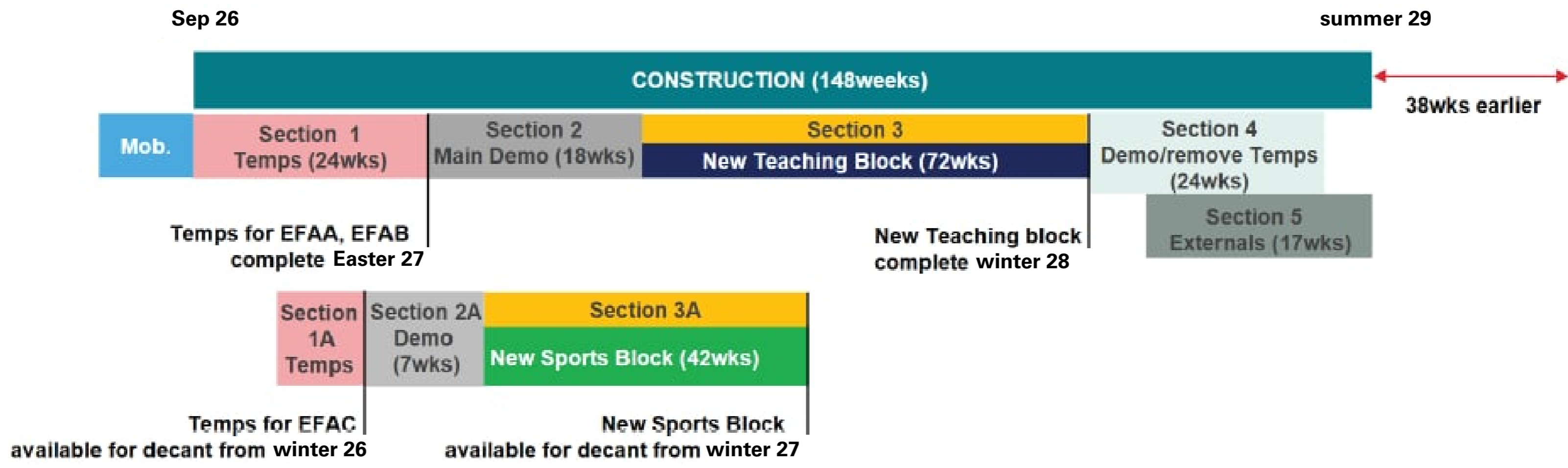
### ELEVATIONS



# ST GREGORY'S CATHOLIC SCIENCE COLLEGE LOGISTICS

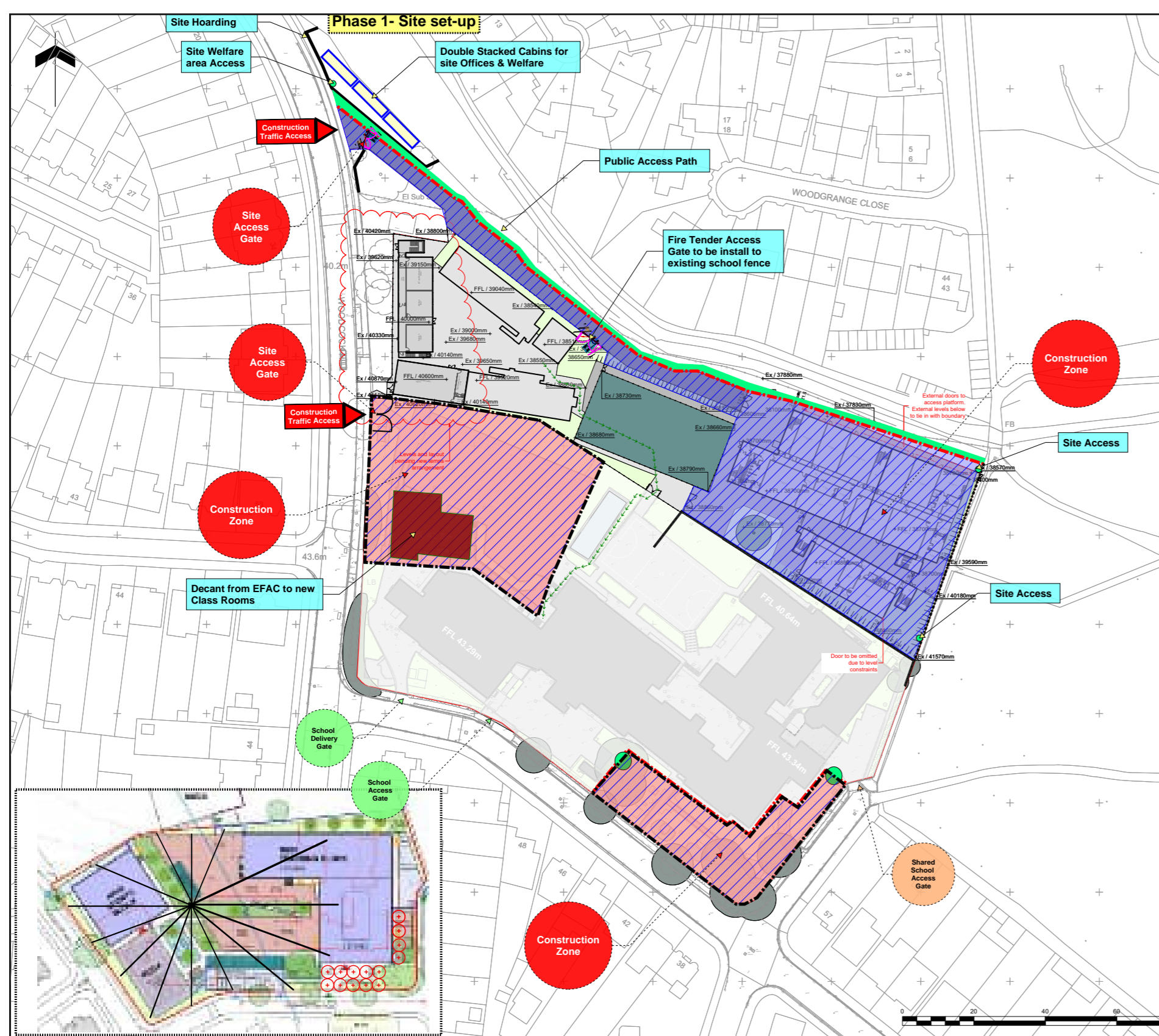


## PROPOSED PROGRAMME

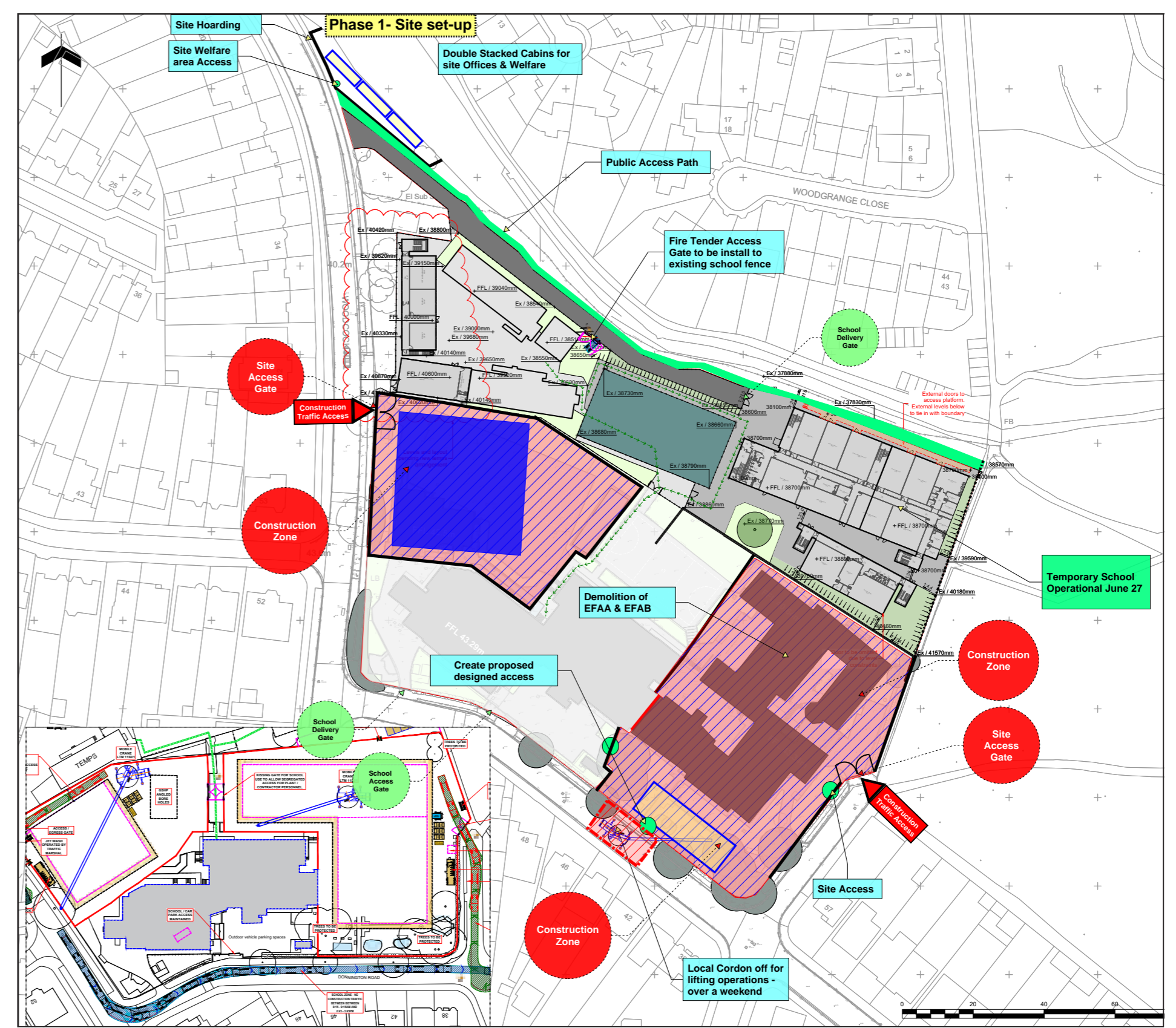


## PHASING

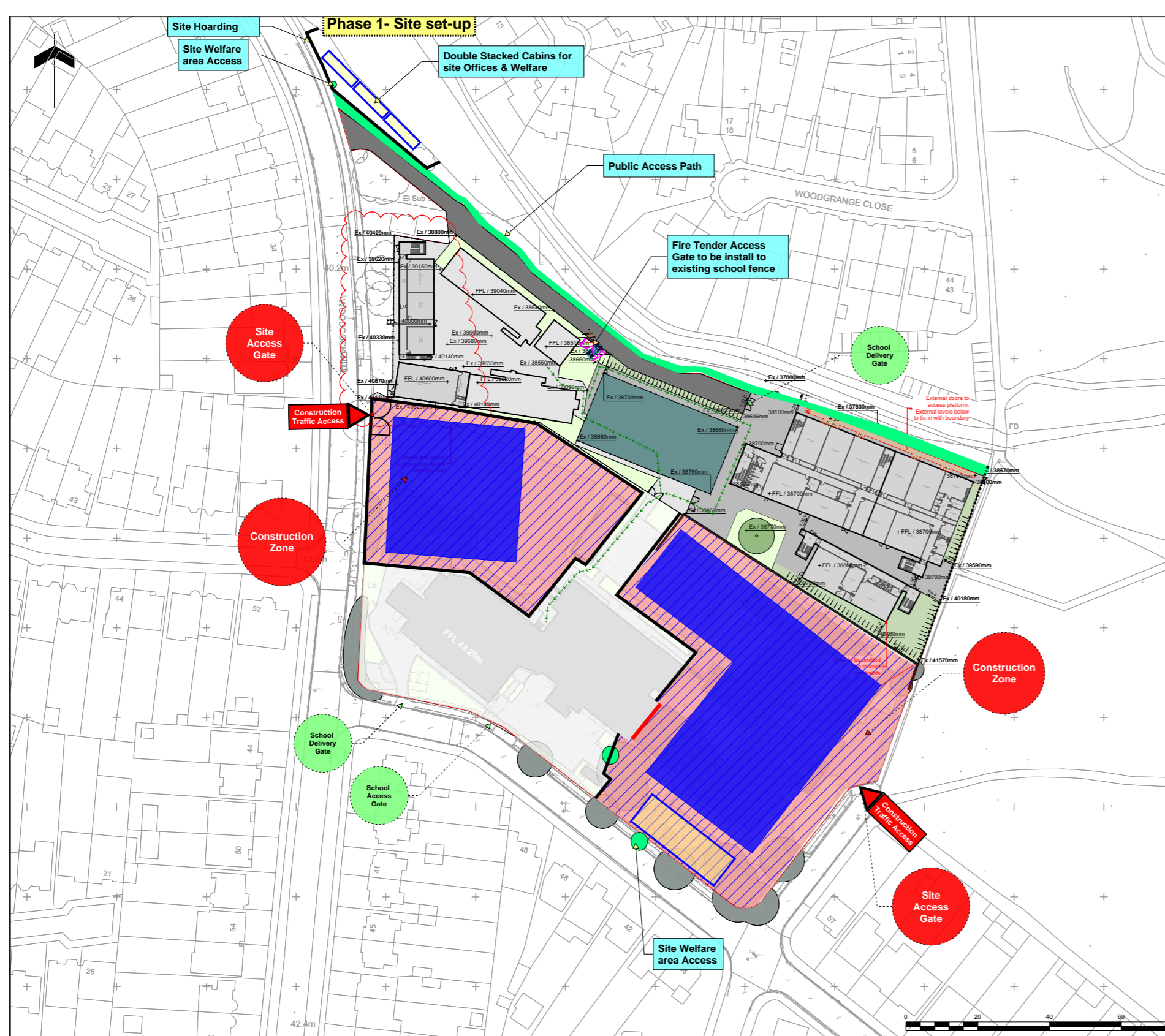
Stage 1



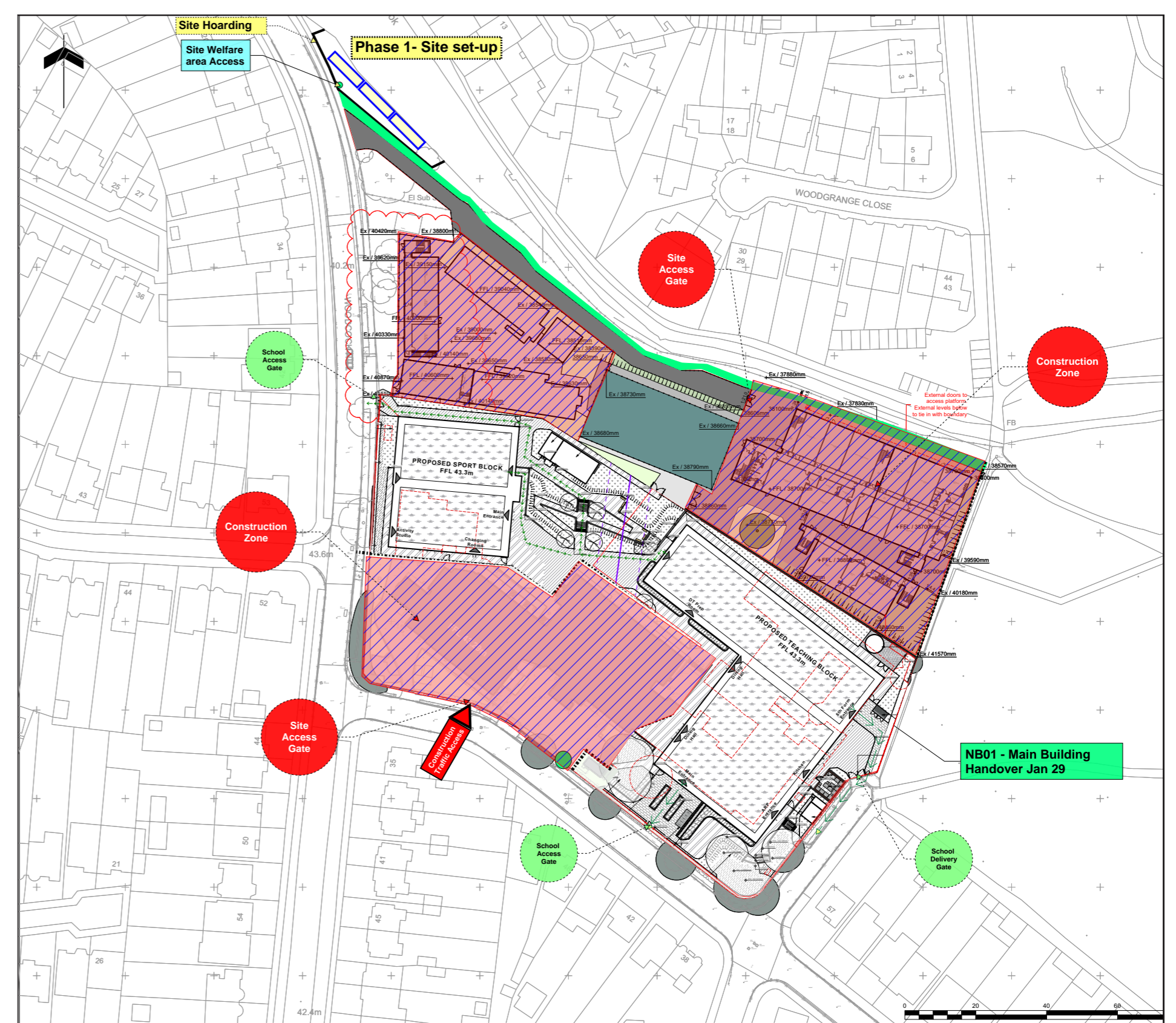
Stage 2



Stage 3



Stage 4



**Construction Stage 7**

- NB02 Sports Hall - Handover (Feb 26)
- NB01 Construction

**KEY**

- Solid Hoarding Line
- Site Access
- Public Access Path
- Segregation Barriers
- Building Cut line
- Local Authority Land
- Within School Boundary

**Note - All construction activities will be planned to avoid disruption during the Statutory Examination Period**